

LIVE  
THE  
**btp**  
LIFE



📍 BTP TERRA, Sector-37D, Gurugram, Haryana - 122001

BTP TERRA, Sector-37D, Gurugram, Haryana-122001

M/s Countrywide Promoters (P) Ltd, an associate Company of M/s BTP Limited, obtained two Licenses bearing no. 83 dated 05/04/2008 and no. 94 dated 24/10/2011 from the Department of Town and Country Planning, Haryana, Chandigarh for setting up a Group housing on combined land measuring 43.558 Acs situated in Sector 37D, Gurgaon. The Building plans of Group housing 43.558 Acs having total 2488 nos of Dwelling units (including EWS) are approved by the DTCP vide memo no. 18868 dated 21/09/12. There is also a provision of 1no High school, 2nos Primary schools, 2no Nursery schools, 1no Community centre, 1no Religious building, 1no Crèche, 1no Dispensary, 1no Sub Post Office and Shopping area. The development phase namely project "Terra" falls in above License(s) and the copies of Licenses / Permissions are placed in the Company's office for references. The Site plan and Unit plans are subject to changes that may occur during course of construction based on the working drawings which shall be regularized by the Company. Housing Loans available from leading Banks/institutions. Loans are subject to individual sanction on terms and conditions of the respective Bank/Institution. Reg Office: OT-14, 3rd Floor, Next Door Parklands, Sector-76 Faridabd Faridabad HR 121004 IN. CIN - U70101HR1996PTC082720. \*Terms & Conditions apply

RERA REGISTRATION NO.: 299 of 2017 dt. 13.10.2017 • <https://haryanarera.gov.in>

PROJECT FUNDED BY\* **IndusInd Bank**



**INCOMPARABLE  
IN ADDRESS.  
PARAMOUNT IN  
STYLE.**

Terra has all the life and charm of peaceful modern living that offers the people of this vibrant city a plethora of amenities to enjoy life to the fullest.

Be it large open spaces to enjoy fresh air, exercising in the open gym, relaxing by the pool or letting the little ones have fun at the play area, one is always spoilt for choice at Terra.

**A NEW PEAK OF  
LUXURY IS YOURS  
TO CLAIM**

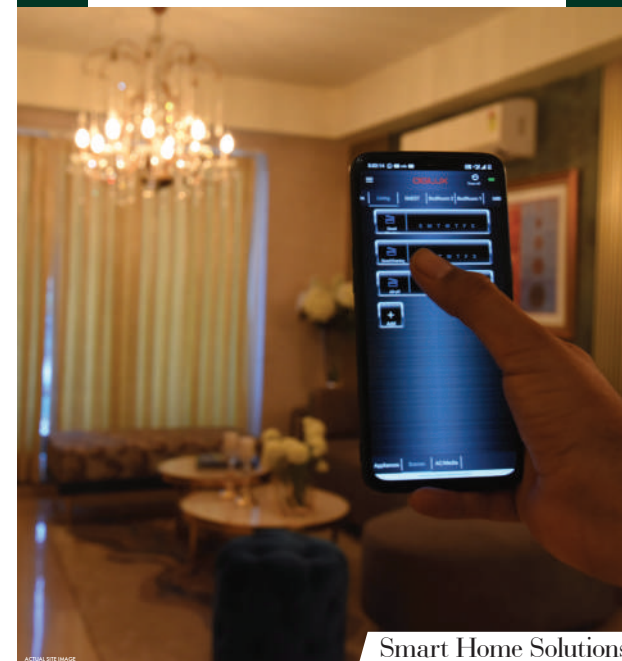
Live in the perfect amalgamation of modern architecture beautifully curated with foliage, giving you the experience of living in luxury with an earthy touch.



Pool Party Deck

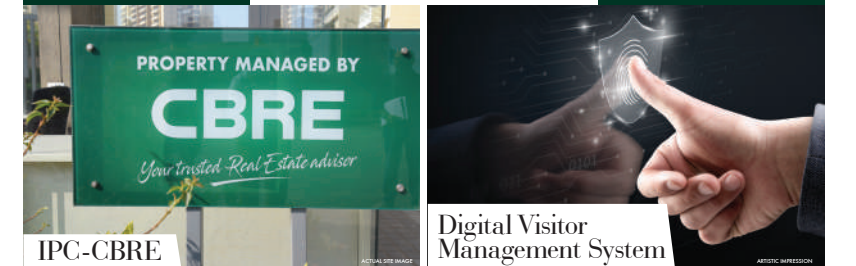
**ELEVATE YOUR LIFESTYLE  
WITH SIX SENSES**

**Innovation & Technology**



Smart Home Solutions

**Safety & Security**



Digital Visitor Management System

**Convenience & Connectivity [0 min from Terra]**



Suncity School

Signature Hospital

**Art & Culture**



Senior Citizen Lounge

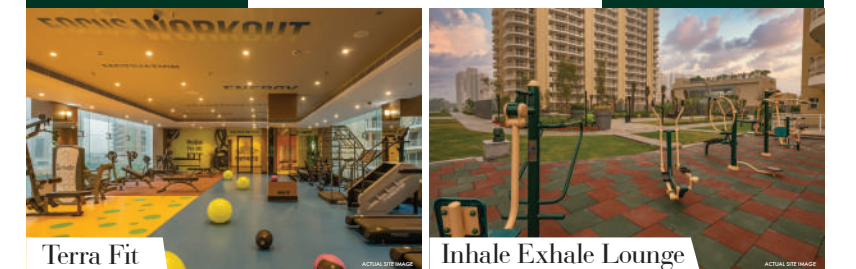
**Food & Entertainment**



Jungle Trail

Artisan Coffee Lounge

**Sports & Wellness**



Terra Fit

Inhale Exhale Lounge

**OUR SUCCESS OVER  
THE YEARS**

**BPTP  
REVOLUTIONIZING  
THE RESIDENTIAL  
EXPERIENCE**

21000+  
UNITS  
DELIVERED\*

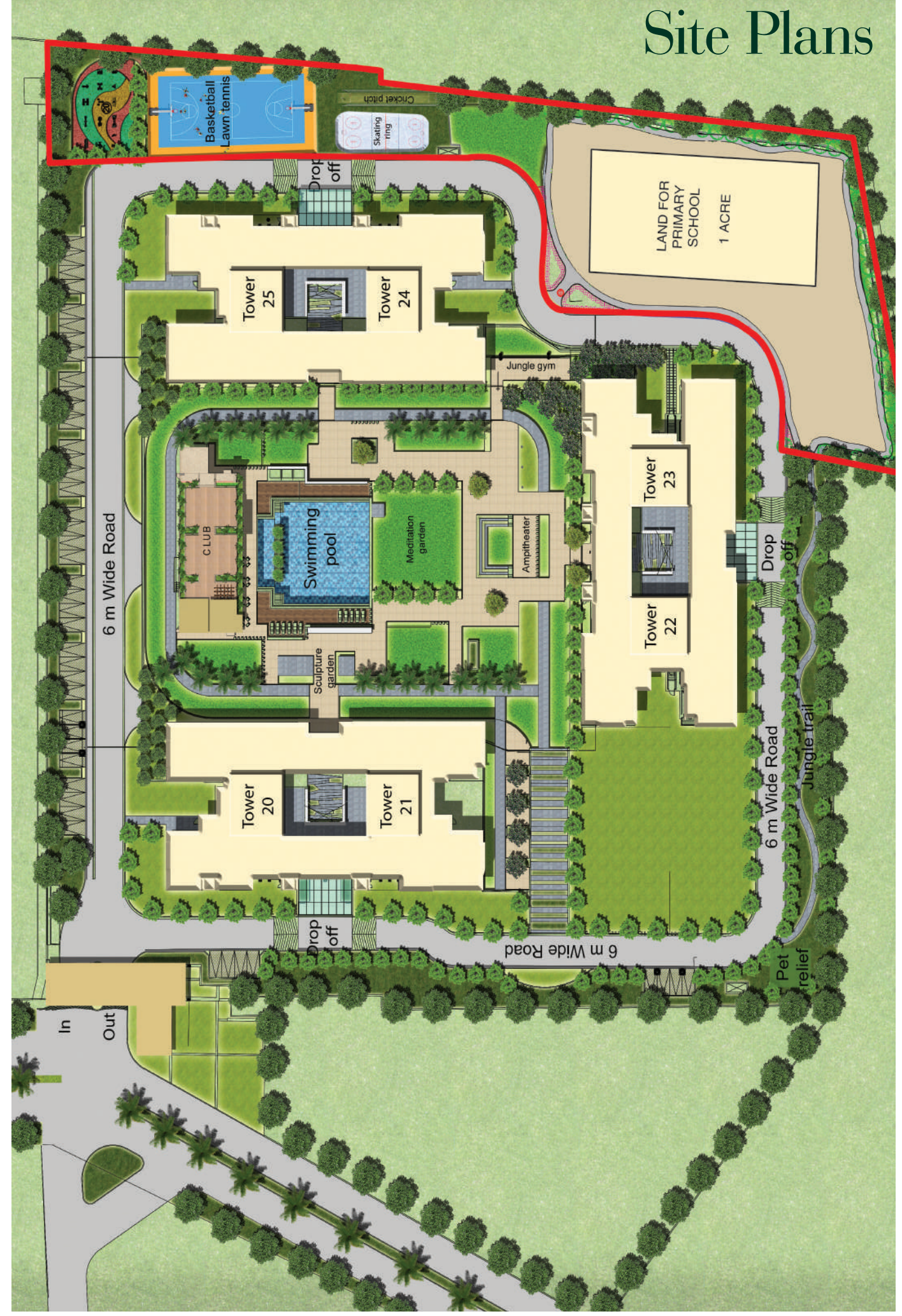
39  
PROJECTS  
DELIVERED  
IN NCR\*

22000+  
HAPPY  
CUSTOMERS\*

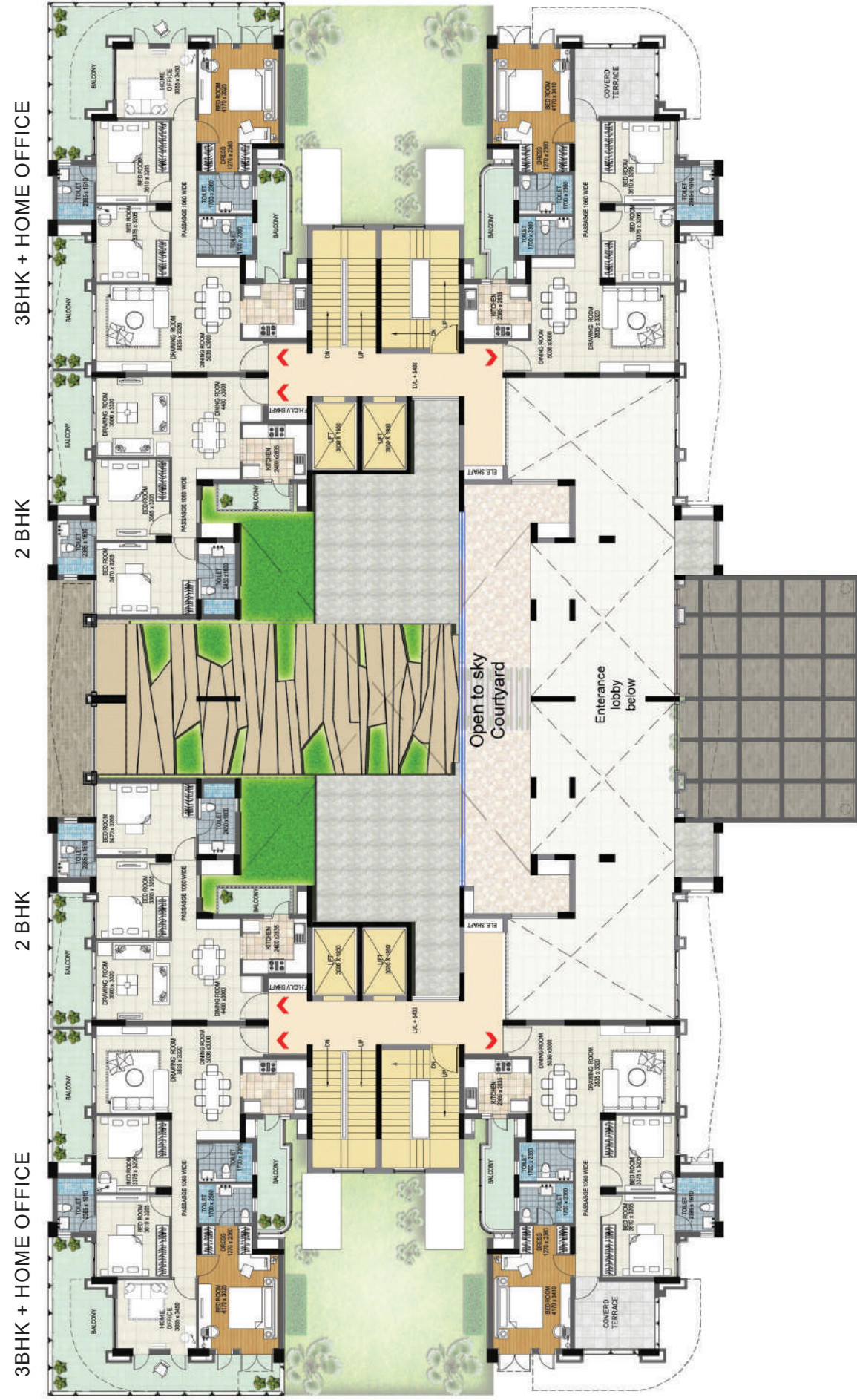
# Location Map



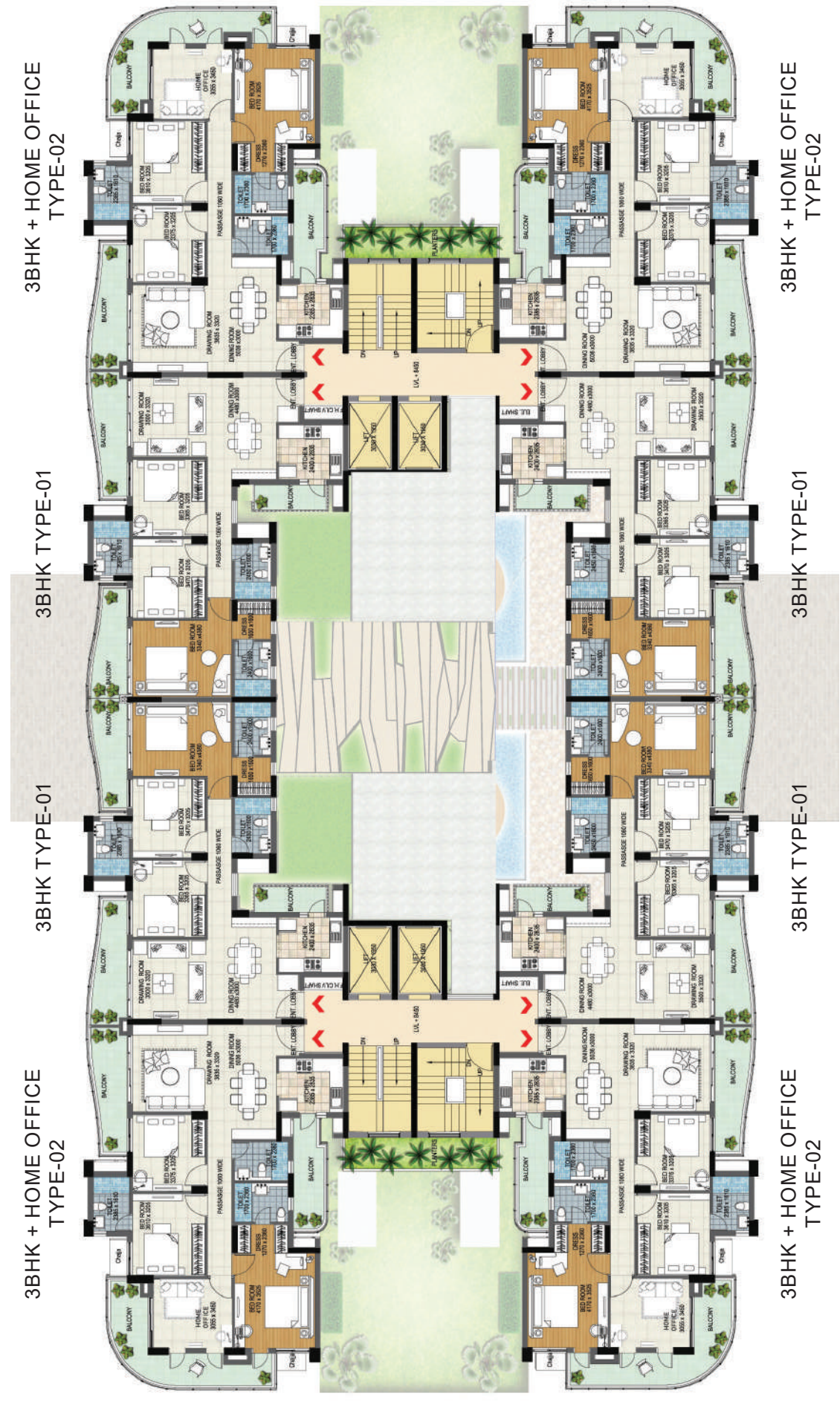
# Site Plans



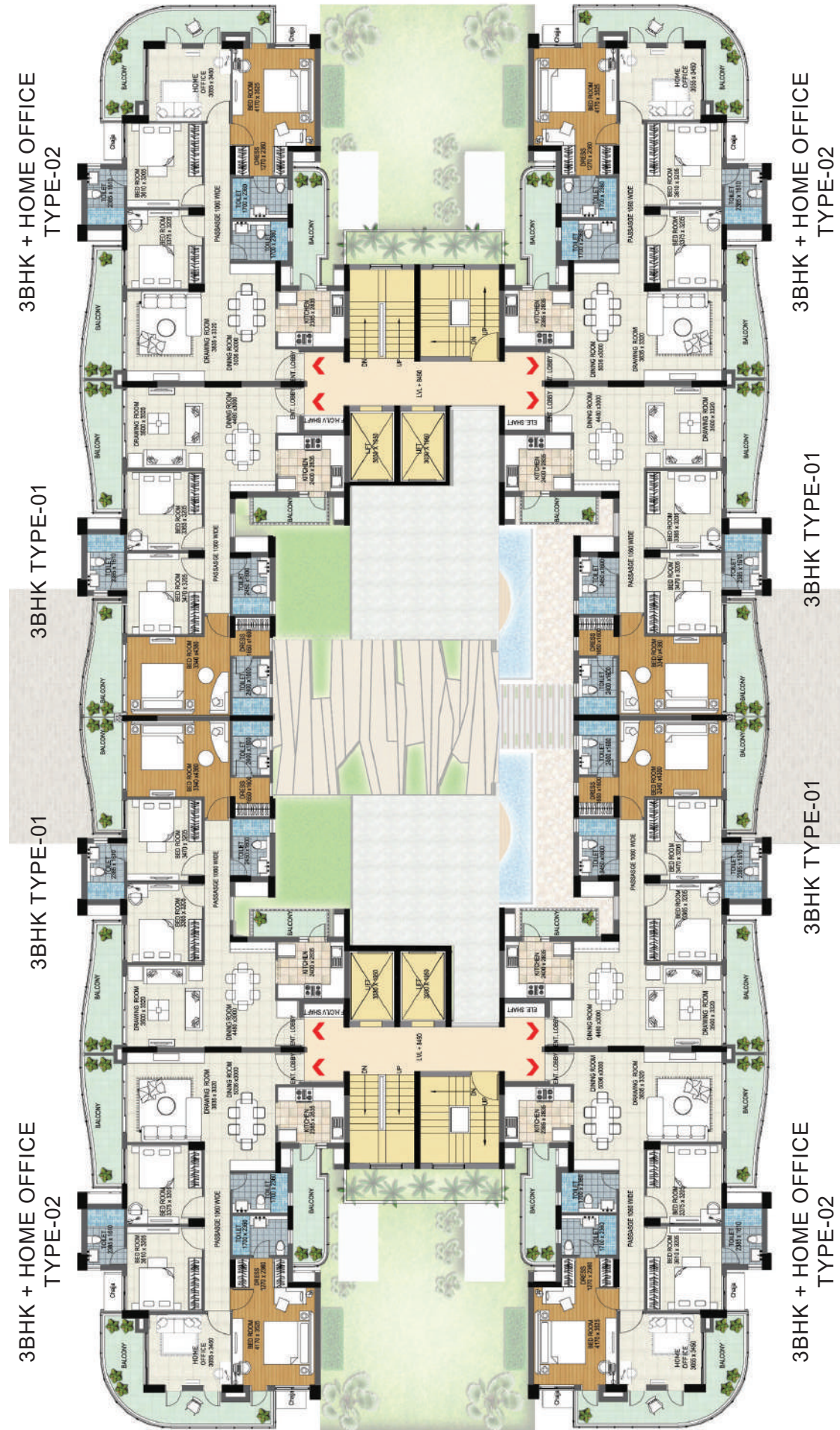
# FIRST FLOOR PLAN



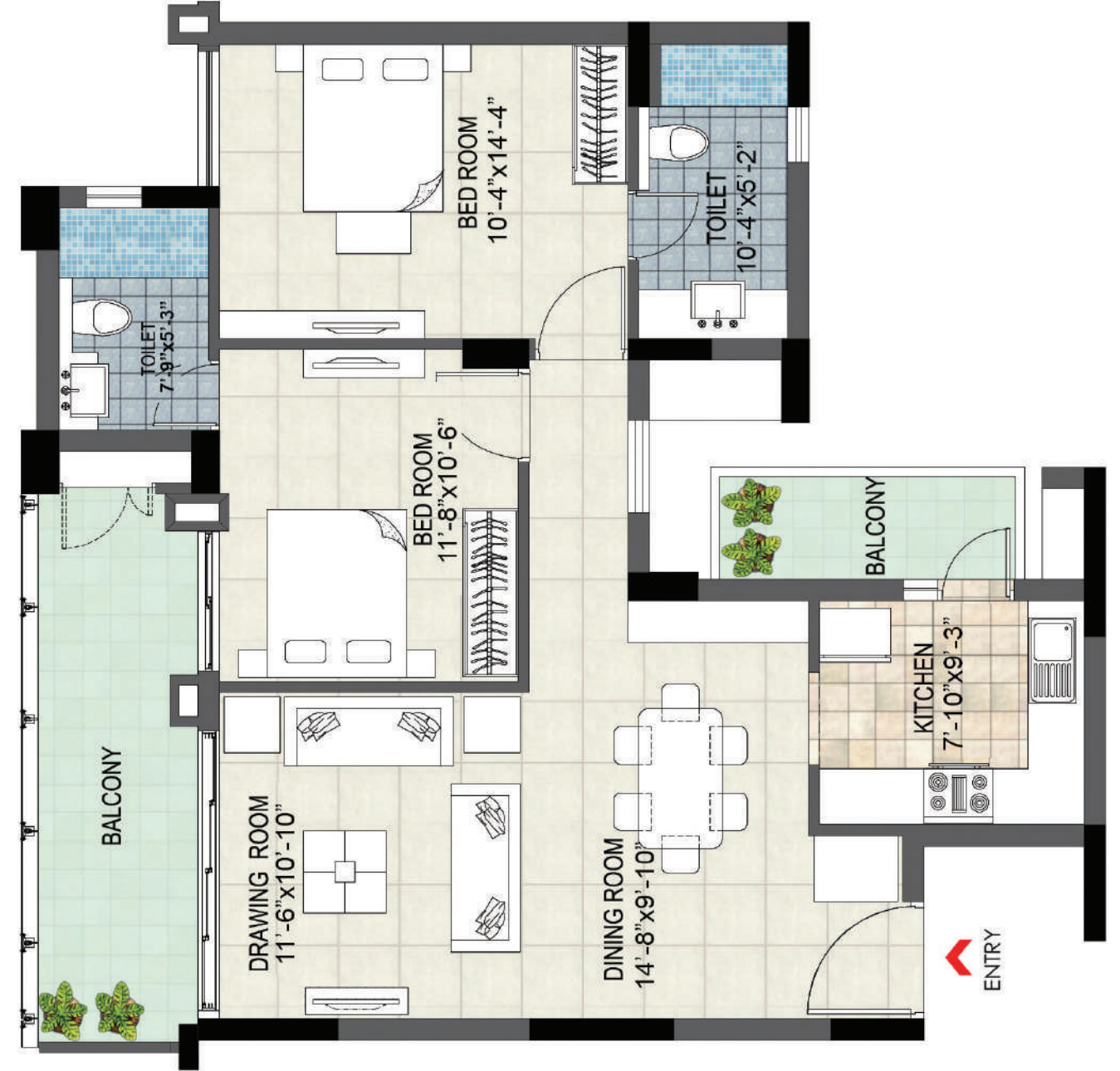
# SECOND FLOOR PLAN



TYPICAL THIRD TO FIFTEENTH FLOOR



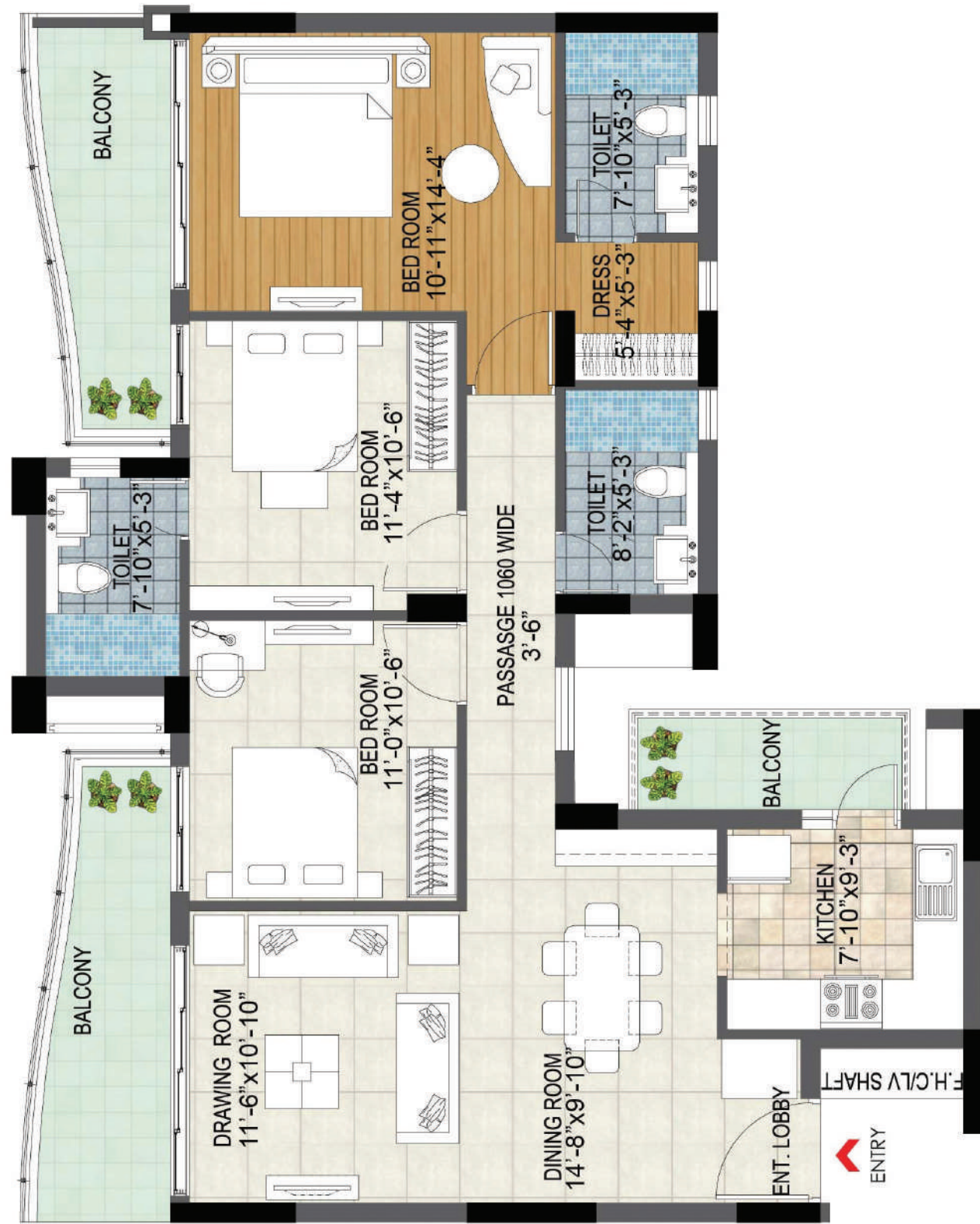
UNIT TYPE (PLAN-1) 2B HK-1410 SQ FT



UNIT	CARPET AREA	COVERED AREA	BALCONY	COMMON AREA SHARE	SUPER AREA	
TYPE	FLOOR	SQFT	SQFT	SQFT	SQFT	
2BHK	FIRST FLOOR	767.85	900.82	146.21	363.41	1410

(1SQ.FT. = 0.092 SQ.MT.)

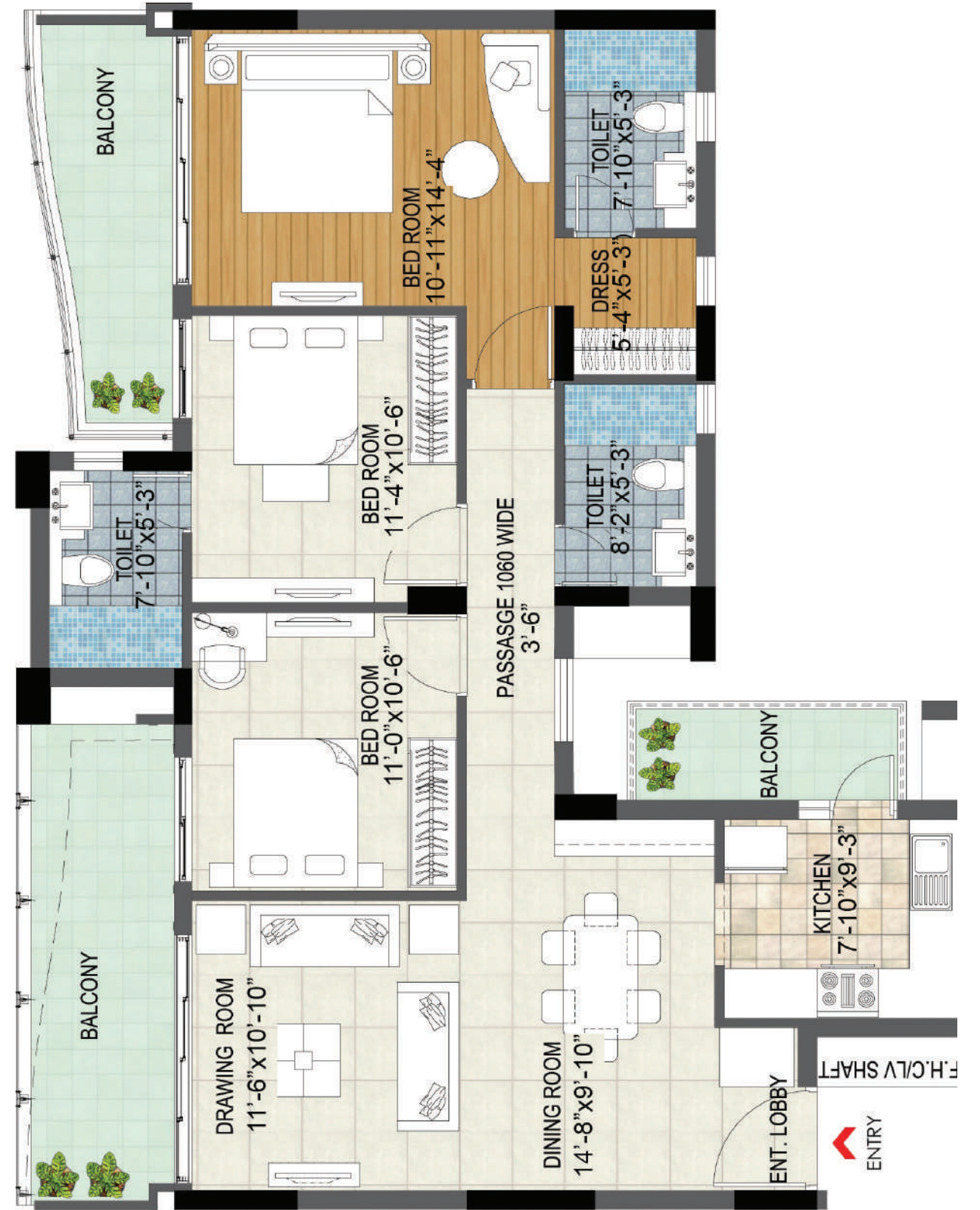
UNIT TYPE (PLAN-2) 3BHK - 1811 SQ FT



UNIT		CARPET AREA	COVERED AREA	BALCONY	COMMON AREA SHARE	SUPER AREA
TYPE	FLOOR	SQFT	SQFT	SQFT	SQFT	SQFT
3BHK TYPE 1	1ST-15TH FLOOR	996.13	1145.8	198.49	466.58	1811

(1SQ.FT. = 0.092 SQ.MT.)

UNIT TYPE (PLAN-3) 3BHK -1832 SQFT



UNIT		CARPET AREA	COVERED AREA	BALCONY	COMMON AREA SHARE	SUPER AREA
TYPE	FLOOR	SQFT	SQFT	SQFT	SQFT	SQFT
3BHK TYPE 2	16TH-19TH FLOOR	996.13	1145.8	214.33	472.08	1832

(1SQ.FT. = 0.092 SQ.MT.)

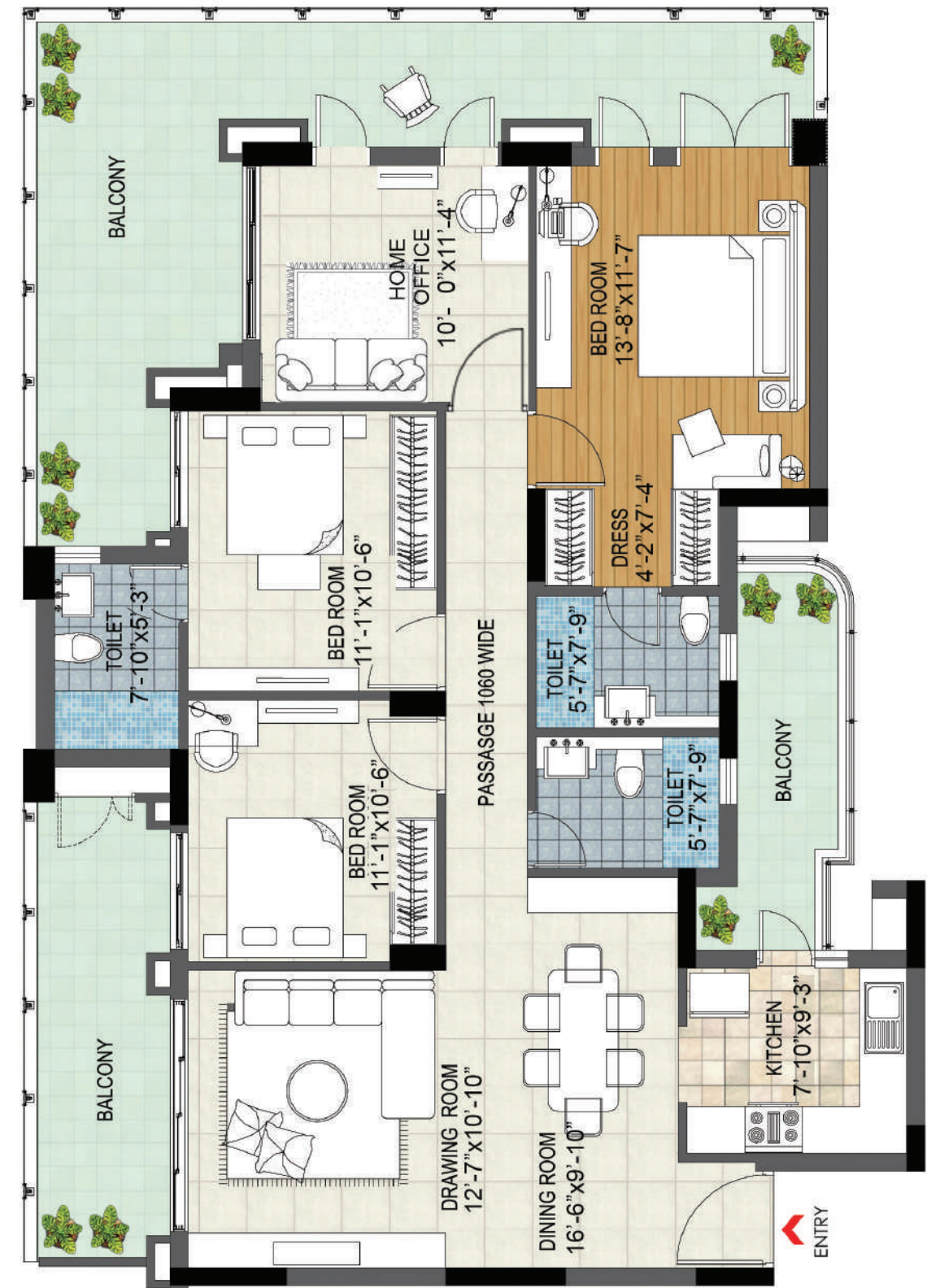
UNIT TYPE (PLAN-4) 3BHK - 1877 SQFT



UNIT		CARPET AREA	COVERED AREA	BALCONY	COMMON AREA SHARE	SUPER AREA
TYPE	FLOOR	SQFT	SQFT	SQFT	SQFT	SQFT
3BHK+TERRACE TYPE 3	FIRST FLOOR	1053.04	1196.59	196.92	483.67	1877

(1SQ.FT. = 0.092 SQ.MT.)

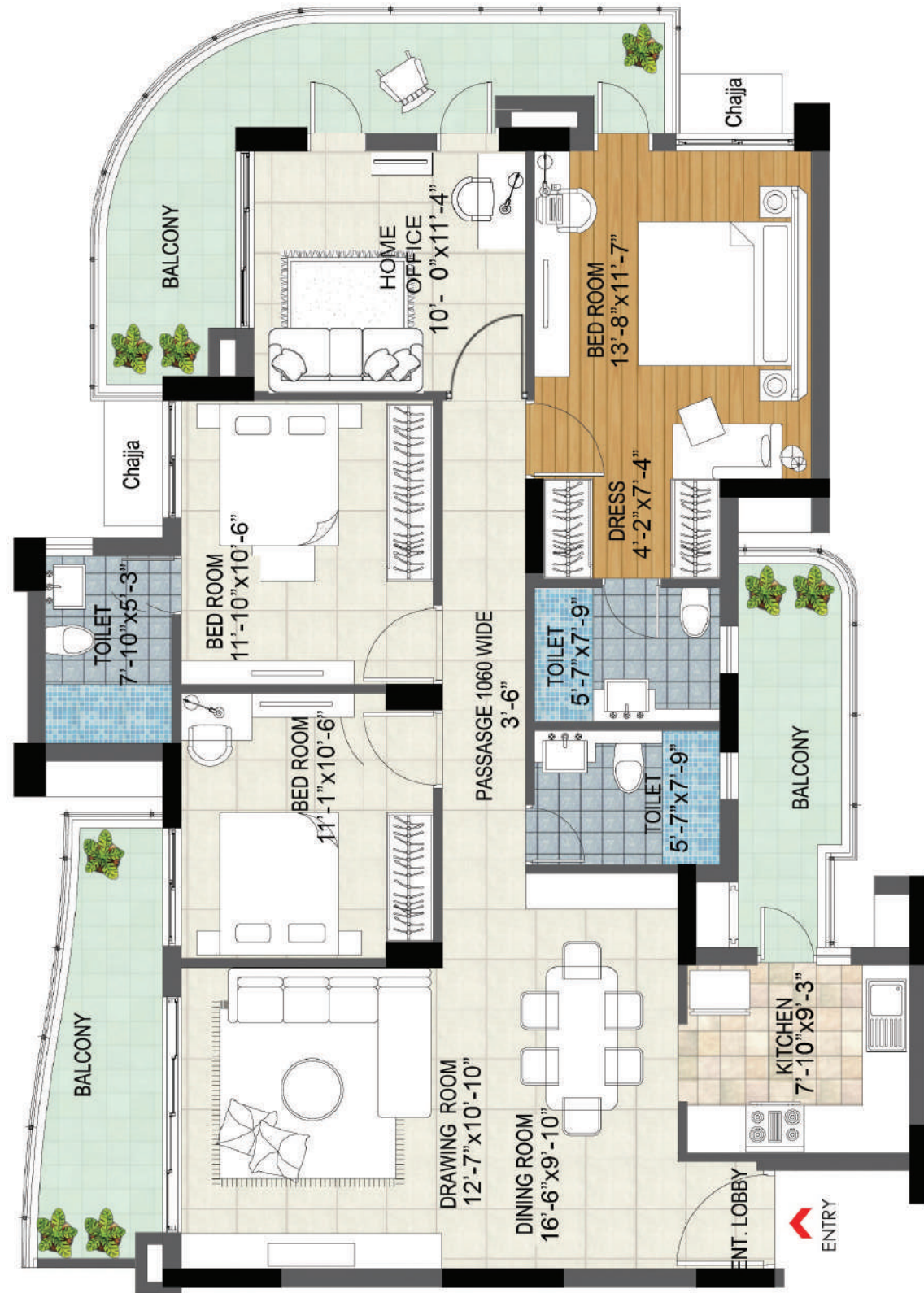
UNIT TYPE (PLAN-5) 3BHK+HOME OFFICE - 2443 SQFT



UNIT		CARPET AREA	COVERED AREA	BALCONY	COMMON AREA SHARE	SUPER AREA
TYPE	FLOOR	SQFT	SQFT	SQFT	SQFT	SQFT
4BHK TYPE - 1	GROUND & FIRST FLOOR	1146.77	1324.91	488.41	629.38	2443

(1SQ.FT. = 0.092 SQ.MT.)

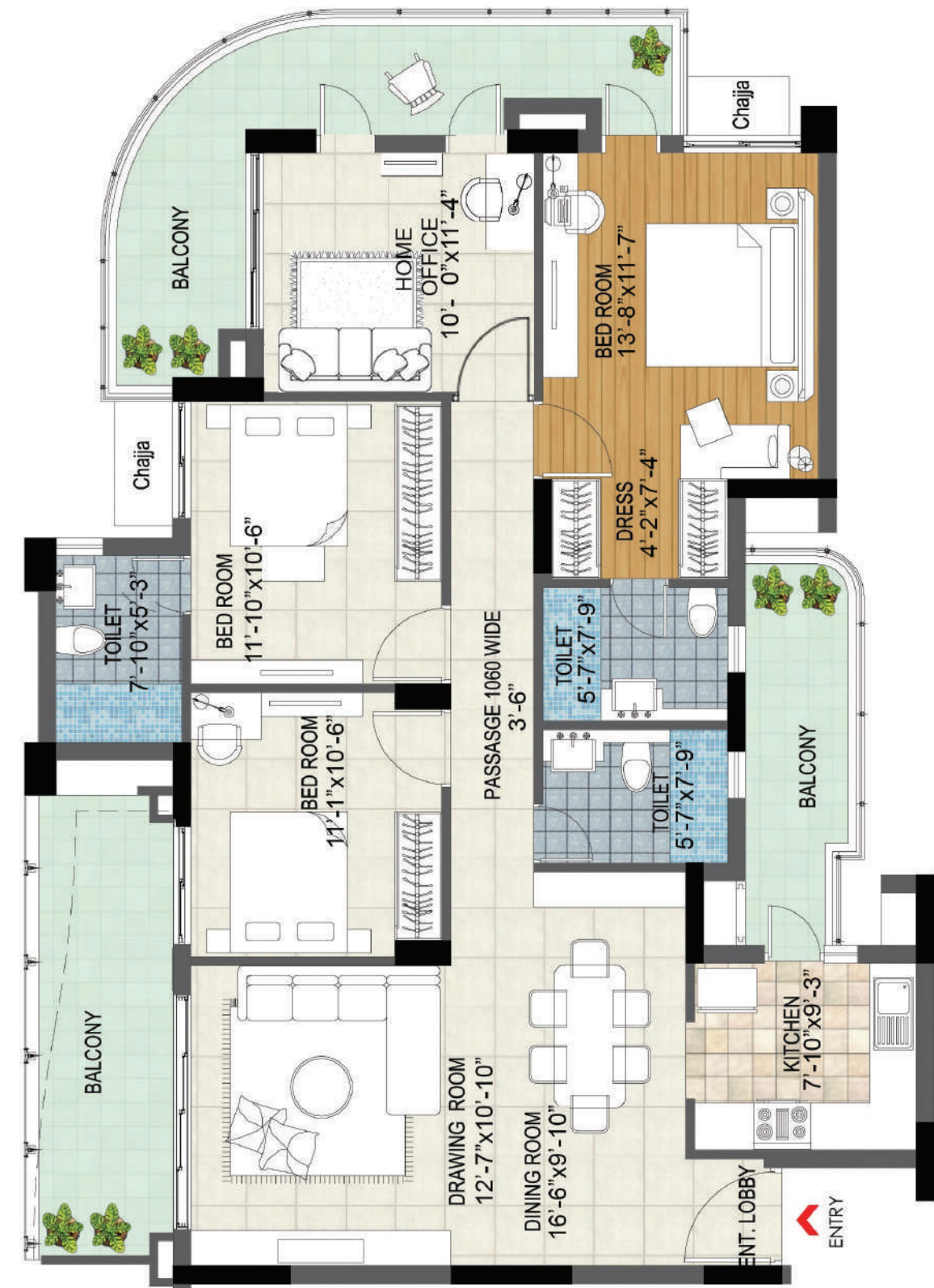
UNIT TYPE (PLAN-6) 3BHK+HOME OFFICE - 2191 SQFT



UNIT		CARPET AREA	COVERED AREA	BALCONY	COMMON AREA SHARE	SUPER AREA
TYPE	FLOOR	SQFT	SQFT	SQFT	SQFT	SQFT
4BHK TYPE - 2	1ST-15TH FLOOR	1146.77	1316.57	310.11	564.60	2191

(1SQ.FT. = 0.092 SQ.MT.)

UNIT TYPE (PLAN-7) 3BHK+HOME OFFICE - 2213 SQFT



UNIT		CARPET AREA	COVERED AREA	BALCONY	COMMON AREA SHARE	SUPER AREA
TYPE	FLOOR	SQFT	SQFT	SQFT	SQFT	SQFT
4BHK TYPE - 3	16TH-19TH FLOOR	1146.77	1316.57	325.96	570.10	2213

(1SQ.FT. = 0.092 SQ.MT.)



## Specifications - Apartments



### Living/Dining Room

- Painted in pleasing shades of acrylic emulsions
- Bottochino imported marble flooring
- Acrylic emulsion paint on ceiling
- Laminated flush doors with stainless steel butt hinges and hardwood door frames
- UPVC windows
- Split air conditioner - 3 star rated
- Schneider - modular switches / sockets, telephone , cable tv

### Master Bed Room

- Painted in pleasing shades of acrylic emulsions
- Laminated wooden flooring
- Laminated flush doors with stainless steel butt hinges hardwood door frames
- UPVC windows
- Split air conditioner - 5 star rated
- Wardrobe
- Schneider - modular switches / sockets, telephone , cable tv

### Other Bed Rooms

- Painted in pleasing shades of acrylic emulsions
- Laminated wooden flooring
- Laminated flush doors with stainless steel butt hinges hardwood door frames
- UPVC windows
- Schneider - modular switches / sockets, telephone , cable tv



### Kitchen

- Vitrified tiles up to 2'-0" above kitchen counter and 5' on other walls rest acrylic emulsion
- UPVC windows
- Modular kitchen with double bowl stainless steel sink, single drain board, branded chrome plated fixtures and composit stone counter with chimney & hob
- Bottochino imported marble floor
- Branded chrome plated CP fitting s- jaquar/grohe

### Bathrooms

- Glazed vitrified tiles
- Armani grey imported marble counter top
- Grohe/kohlar CP fittings and kohlar/ american standard white chinaware
- Vanity only in master bedroom toilet

### Balconies/Terraces

- Weather proof paints
- UPVC windows
- Designer ms railing
- Matt finish vitrified tiles

## Specifications - Entrance lobby & Tower lobby



### WALLS

- Entrance lobby - stucco paint
- Lift lobby (ground floor) - bottochino imported marble and backlit alabaster (artificial onyx)
- Lift lobby (typical floor) - combination of bottochino imported marble, large format vetrified tiles, painted in acrylic emulsion

### CEILING

- Entrance lobby - pop
- Lift lobby (typical floor) - pop
- Lift lobby (ground floor) - pop

### FLOORING

- Entrance lobby - bottochino imported marble
- Lift lobby (ground floor) - bottochino imported marble
- Lift lobby (typical floor) - large format vetrified tiles

Architect and the developer reserves the right to alter the specifications, brands and facilities for the design improvement



Package 1

### Smart Technology

- Video door phone
- Door lock - fingerprint, touch passcode and manual key
- Smart touch panel- for individual lighting, mood control, scheduling, curtain panel
- IR blaster for AC temprature control
- Voice assistance for voice control
- Curtain motors and track for windows
- Smoke and gas leak detector

At Additional Cost\*



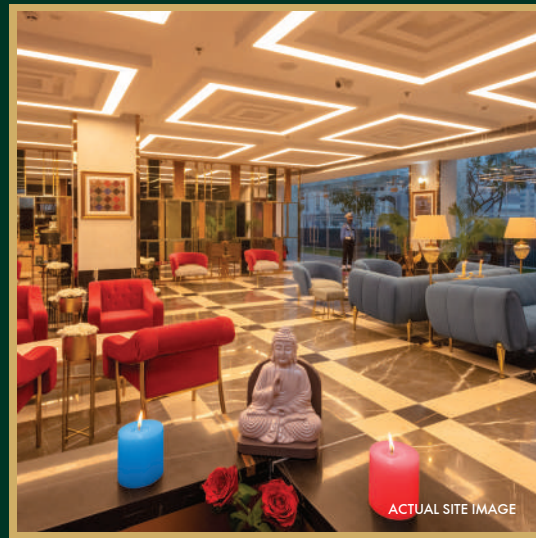
Package 2

### White Goods

- LED Smart TV
- Refrigerator
- Microwave
- Washing machine

At Additional Cost\*

# Specifications - TERRA CLUB AMENITIES



## TERRACOTA LOUNGE

- Waiting area & reception
- Coffee bar station
- Exclusive lounge with world cuisine



## POOL SIDE

- Swimming pool
- Outdoor meeting room
- Outdoor dining



## INHALE & EXHALE LOUNGE

- Yoga/zumba/meditation/kick boxing
- Fitness centre
- Kids play area



## TOP OF TERRA

- Party terrace
- Bar station
- Outdoor movie screening
- Piped music



Meditation Garden

ACTUAL SITE IMAGE



Jungle Gym

ACTUAL SITE IMAGE



Amphitheatre Area

ACTUAL SITE IMAGE